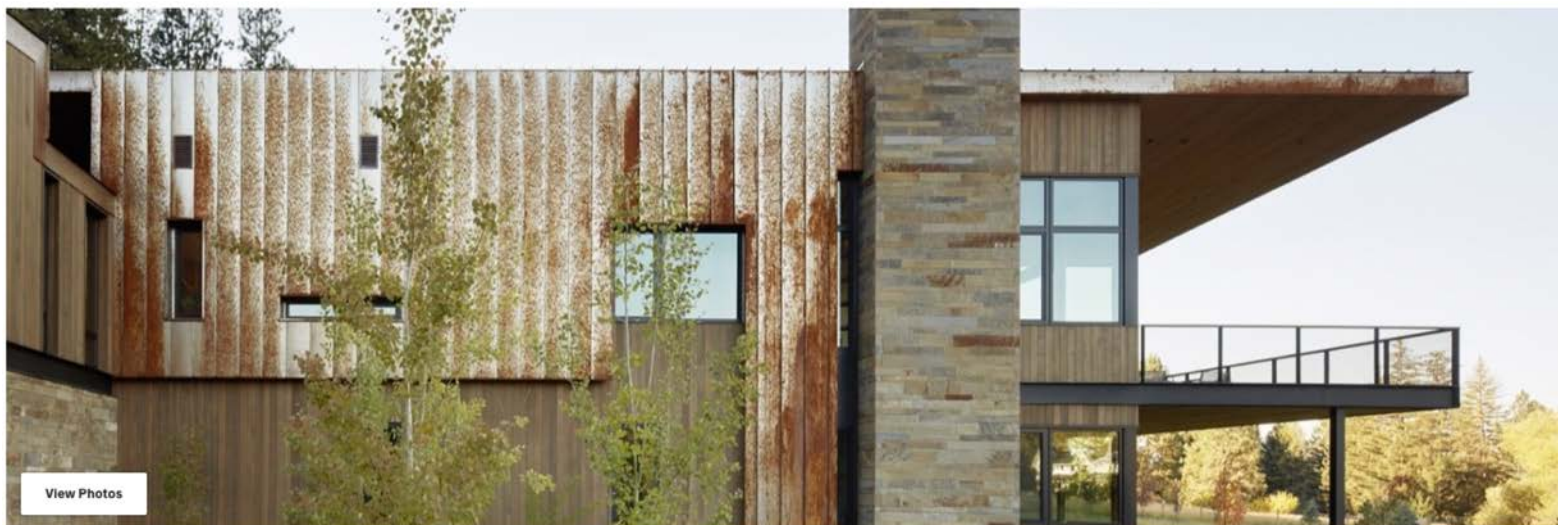


HOME TOURS

A Modern Montana House Mixes a Love of Art With the Outdoors



By Lucy Wang – September 20, 2018



Tucked in a lush valley, this modern Montana home is a contemporary take on the local rural vernacular.

Tapped by art collectors to design an inspirational residence in rural Montana, Jackson Hole–based Carney Logan Burke Architects have crafted a modern house that’s not only designed around the owners’ art collection, but also frames the property’s extraordinary landscape views.



The modern Montana home is nestled into a transitional zone between a forested butte and a grassy meadow in the western part of the state.

Matthew Millman

To knit the three-bedroom residence into the landscape and capitalize on the spacious eight-acre valley property, the architects have organized the 9,000-square-foot home—named the RCR Compound—as a series of connected buildings arranged around an elevated courtyard.



"The library space is positioned on the intimate courtyard nestled into the base of the butte," note the architects. "Here, an expressive, sheltering roof tilts up to capture natural light and rising views of the old-growth pine forest."



The extended overhanging roof with its tongue-and-groove hemlock soffit provides shade and shelter to the elevated courtyard.

Matthew Millman

A reductive material palette, massive windows, and outdoor terraces help create a seamless connection between indoors and out.

"Wood and plaster surfaces are used throughout the project to engender warmth but not to compete with the art," explain the architects. "Ledger-cut Montana Sandstone, clear cedar, and oxidized steel roof-and-wall paneling speak to the regional vernacular."



The residence is clad in a combination of vertical grain cedar, Firestone aluminum, and Corten standing-seam metal. The stone is Frontier Sandstone.

Matthew Millman

Connected via glazed walkways, the programmatic spaces have been spread out to maximize views in different directions.



A glimpse of the master bedroom framed with full-height windows and sheltered by a deep roof overhang.

Matthew Millman

For instance, the primary living and entertaining spaces are located just above the meadow to frame south-facing views of the distant mountains, whereas the sleeping quarters are placed in a separate volume located closer to the forested slope toward the north.



The open kitchen is fitted with Perla Venato Quartzite countertops and timber cabinetry.

Matthew Millman



The dining room is furnished with Holly Hunt tables and chairs. Mammalampa's Queen Pendant lamp hangs above.

Matthew Millman

The primary living and sleeping areas are located on the upper floor, while the lower "meadow-level" houses a den, exercise room, and art storage. A guest house, constructed in a similar style to the main house, is also located nearby.



The spacious second-story terrace projects toward the south to overlook views of the meadow.

Matthew Millman

"Carefully detailed wood buildings sit gracefully atop stone walls that extend into the landscape," the firm continues. "Roof forms taper and tilt to visually knit the complex into the site topography."



The ceilings throughout the house are CVG Western Hemlock. The floors are walnut.

Matthew Millman



A large pool is located on the east side of the residence.

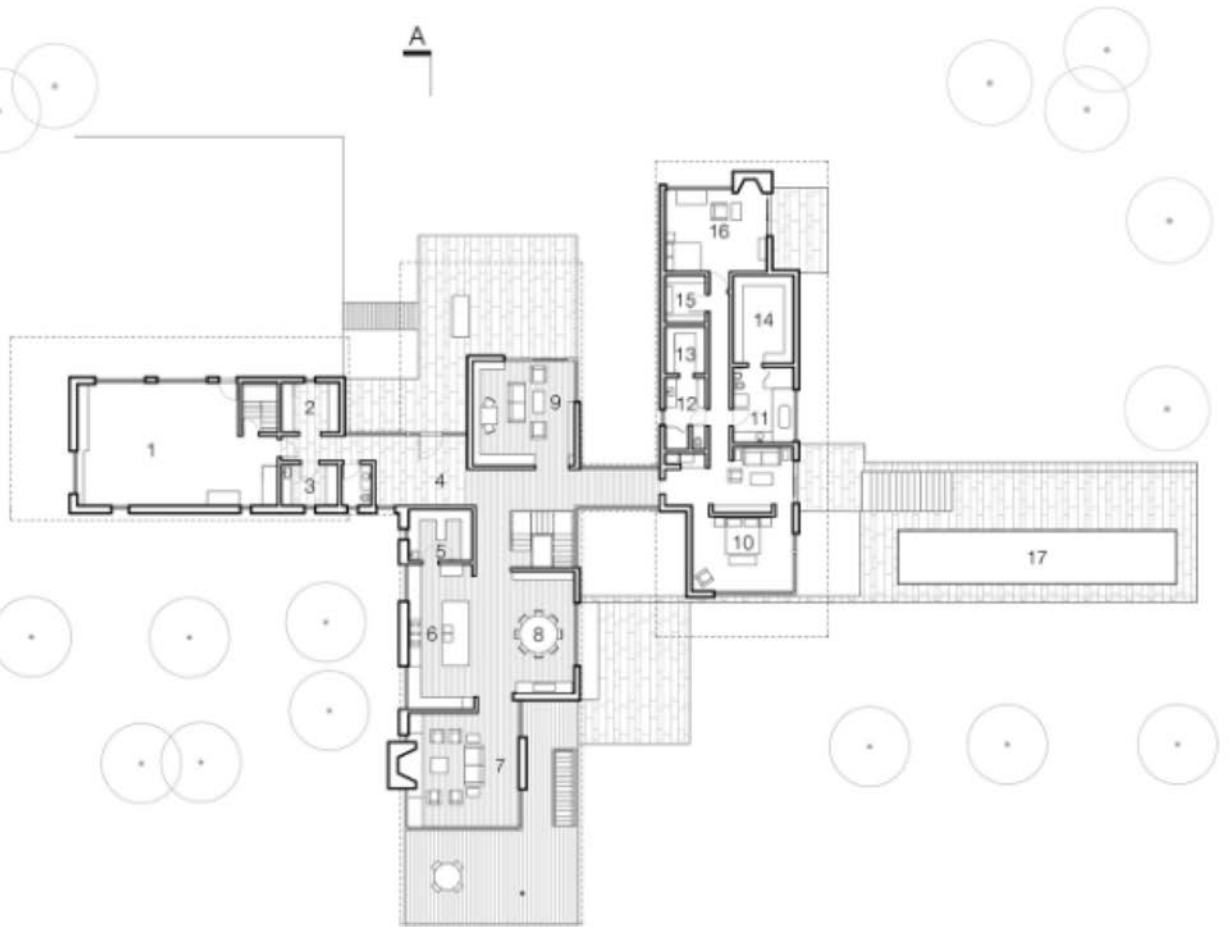
Matthew Millman



The modern home also includes one of Richard Serra's monumental sculptures made of weathering steel.

Matthew Millman

- 1 Garage
- 2 Mud Room
- 3 Laundry
- 4 Entry
- 5 Pantry
- 6 Kitchen
- 7 Living
- 8 Dining
- 9 Library
- 10 Bedroom
- 11 Bathroom
- 12 Bathroom
- 13 Closet
- 14 Closet
- 15 Closet
- 16 Sitting Room
- 17 Pool



A look at the RCR Compound Upper Floor Plan.

Project Credits:

Architect of Record: Carney Logan Burke Architects / @clbarchitects

Builder/ General Contractor: Buckley Builders

Structural Engineer: KL&A, Inc.

Civil Engineer: WGM Group

Lighting Design: Helius Lighting Group

Interior Design: Dusenbury Design

Sound Engineer: Acoustic Vision

Other: Norris Woodworking

Pool: Erickson Pools

