



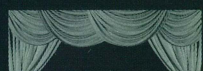
TO

By Ifengspace Shanghai

ENJOY TO LISTEN



CINEMAS



THEATERS

Phoenix



MUSIC HALLS



PERFORMING ARTS
CENTERS

The Power of Art

Performing Arts Pavilion of the Center for the Arts

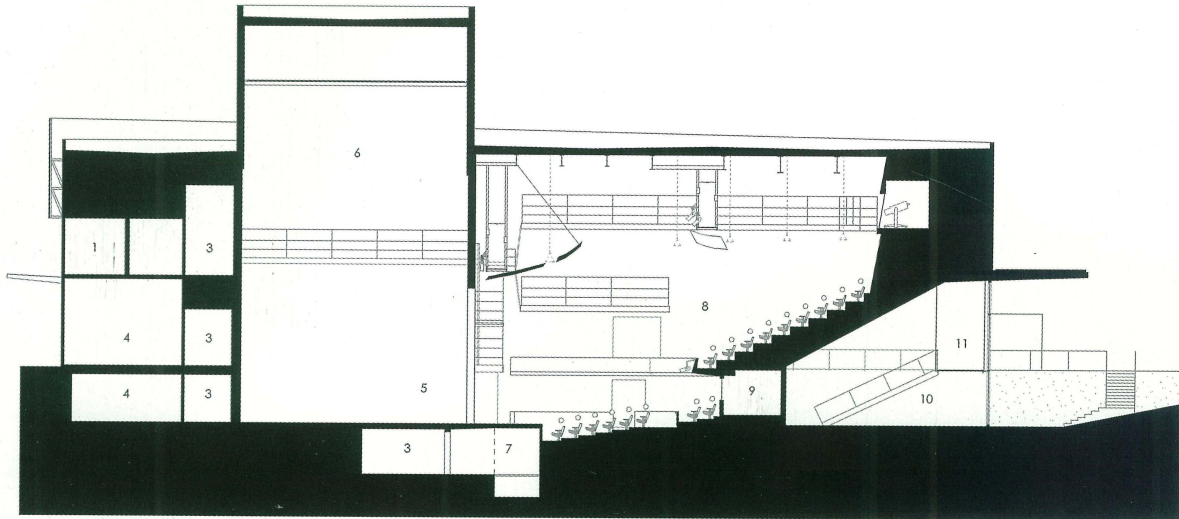


Highlight

The pavilion is not only capable of various types of performances, but also ensures that everyone of the audience can enjoy the charm of art and has a unique experience.

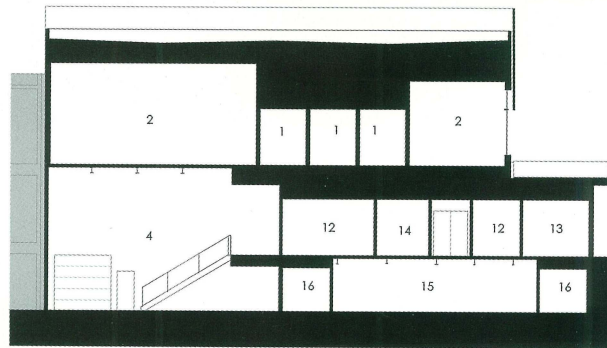
Credits

Location: Jackson, Wyoming, USA
Completion Year: 2007
Area: 3,623 m²
Type: Cultural Institution-Theater
Architects: Stephen Dynia Architects,
Carney Logan Burke Architects
Contractor: GE Johnson
Awards:
2008 Merit Award, AIA Wyoming Chapter
2007 Merit Award, AIA Western Mountain Region Chapter



Building sections

1. Individual practice
2. Group rehearsal
3. Storage
4. Scene shop
5. Stage
6. Fly loft
7. Orchestra pit
8. Audience chamber
9. Control room
10. Lobby
11. Bridge
12. Office
13. Green room
14. Fire pump room
15. Dressing room
16. Bathroom



For this project Carney Logan Burke Architects paired with Stephen Dynia Architects to form the Arts Design Collaborative. The two firms worked in partnership to develop the Performing Arts Pavilion of the Center for the Arts, with Carney Logan Burke Architects serving as Executive Architect and Stephen Dynia Architects serving as Design Architect.

The Center for the Arts project was undertaken in cooperation with the Town of Jackson and Teton County to create a campus that brought together

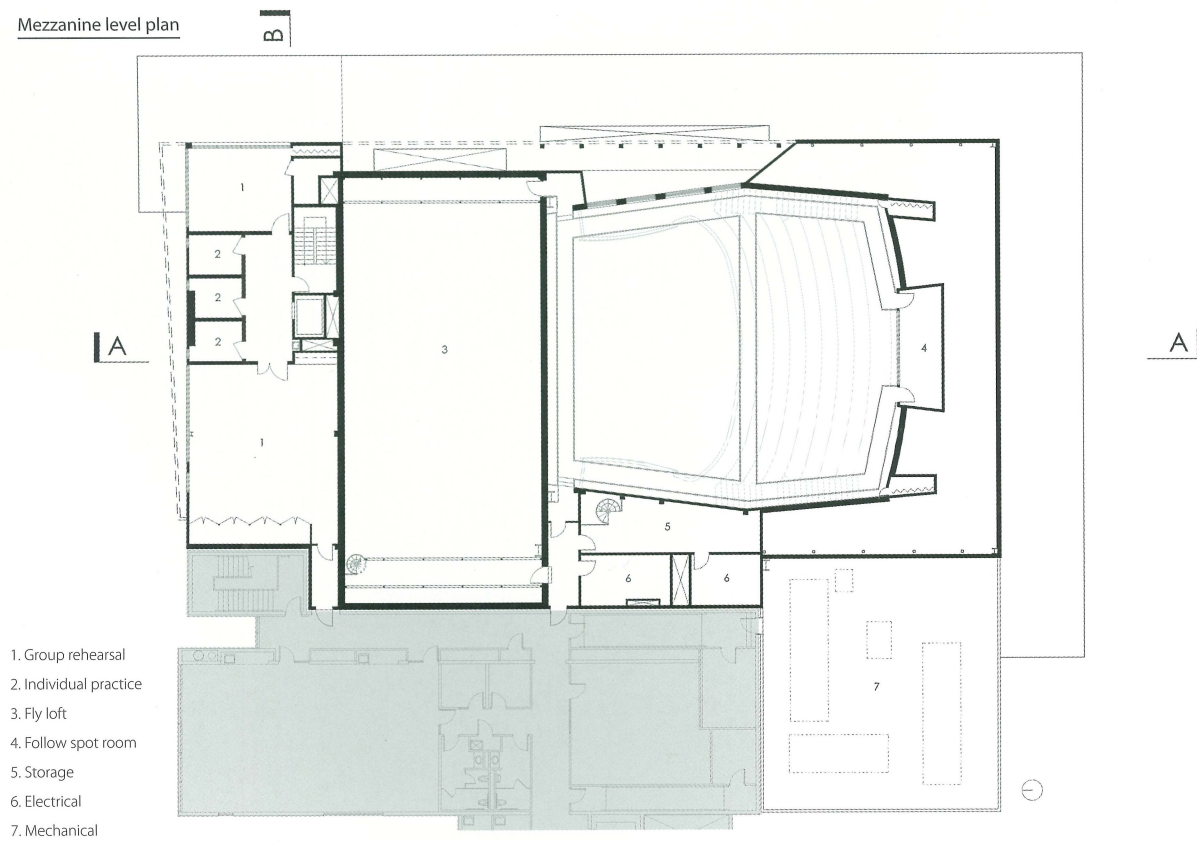
twenty local arts and education organizations. The 3,623 m² Performing Arts Wing complements the 3,716 m² Arts and Education Wing and includes a 525-seat proscenium theater, lobby, rehearsal facilities, scene shop, and other administrative and support spaces. The theater is designed to function flexibly, so that the different disciplines represented under the Center banner are able to use the facility to showcase their productions. In addition to accommodating a wide variety of performance types, the theater can also modify its seating capacity to ensure an intimate

experience for every audience.

The theater seating expresses an artistic vision for the Performance Wing, with the underside of the seating arena exposed and visible from the lobby below. Clad in wood, the spherical sculptural form hovers above the entrance hall, creating a dramatic focal point for the foyer space and functioning as an icon for the pavilion.

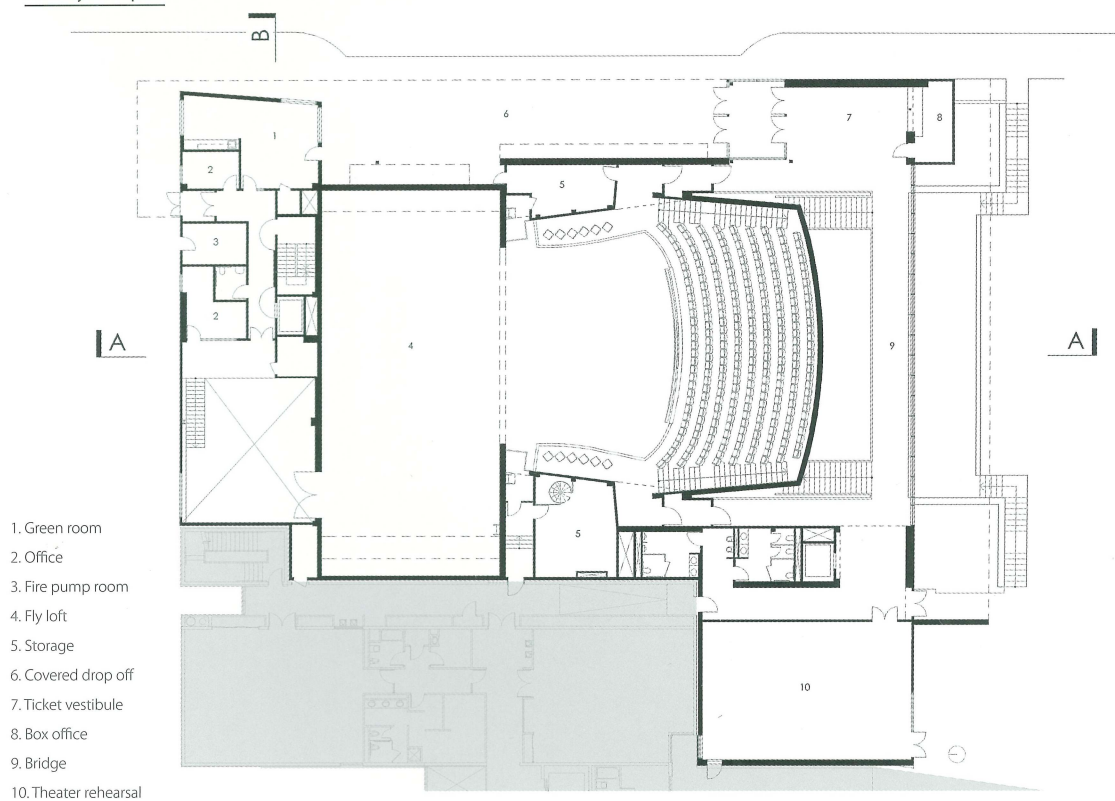


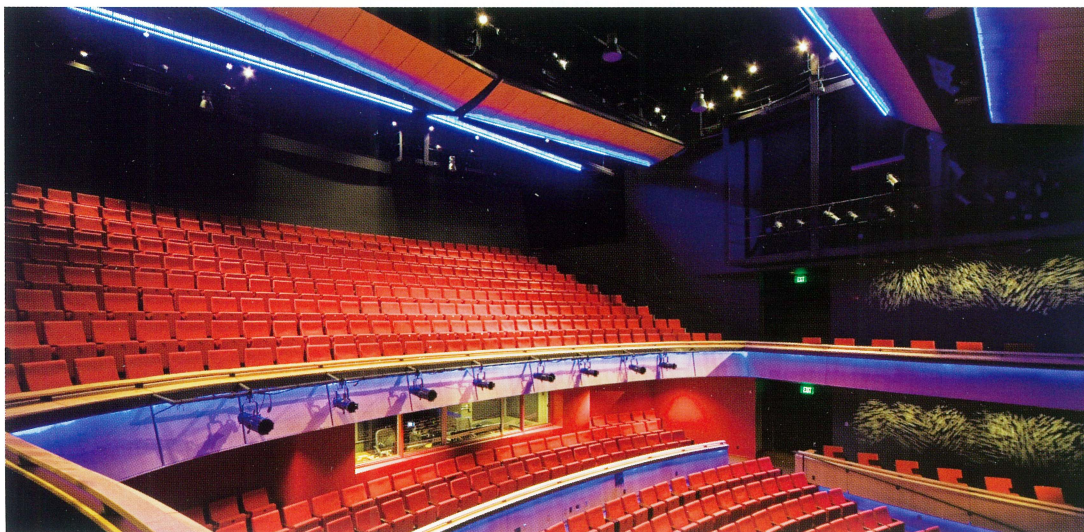
Mezzanine level plan





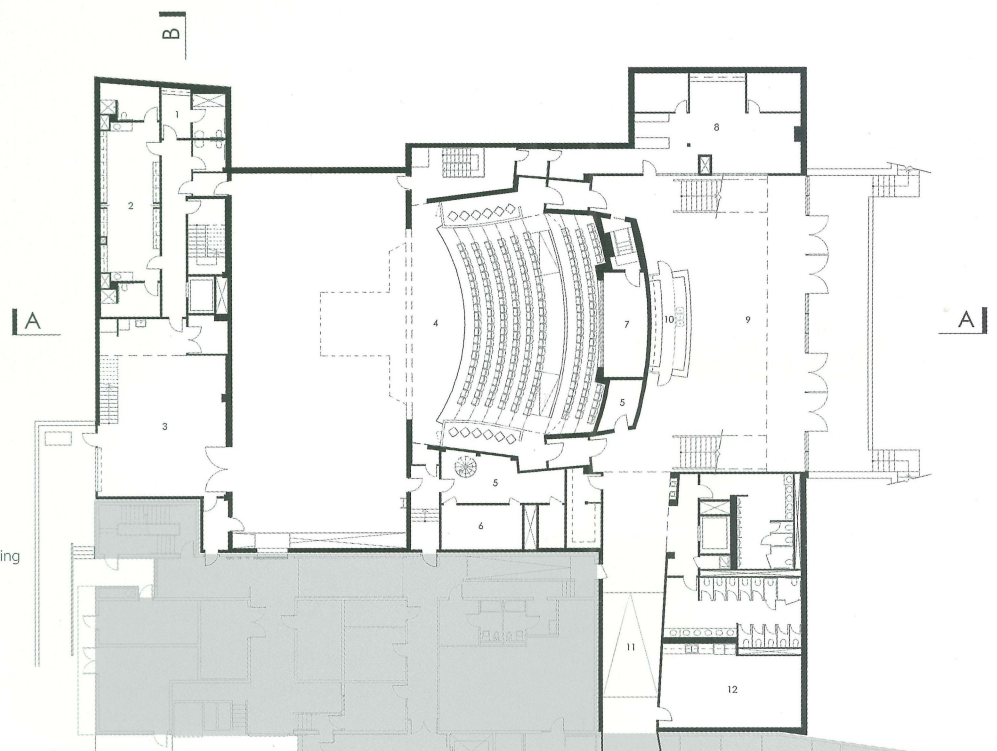
Balcony level plan







Orchestra level plan



1. Individual dressing
2. Dressing room
3. Scene shop
4. Stage
5. Storage
6. Electrical
7. Control room
8. Office
9. Lobby
10. Concessions bar
11. Gallery
12. Consumer shop