

SOUTH AMERICA

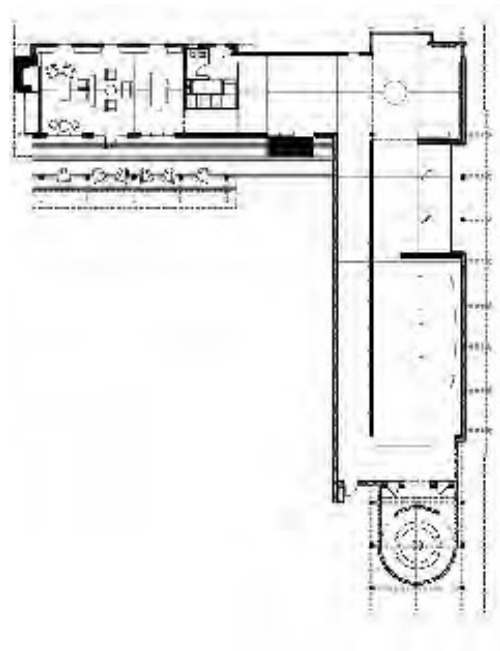
1000x

ARCHITECTURE OF THE AMERICAS

BRAUN



01



02

LAURANCE S. ROCKEFELLER PRESERVE, GRAND TETON NATIONAL PARK, WYOMING

This 7,000-square-foot USGBC LEED Platinum Certified Interpretive Center, and its related trails, represents a gift of 1,100-acres from the Rockefeller family to the National Park Service. The building is self-guiding, with the goal of awakening the senses so that visitors may gain a heightened appreciation of the landscape. More like a chapel than a visitors center, the L-shaped, rectilinear order of the building curves to an apse-like form at its south end. Vertical wood slats reminiscent of old barns, bring narrow slits of light into the chapel-like space, suggesting the spiritual power of nature.

01 Exterior view 02 Main floor plan 03 View from north
04 Porch detail 05 Interior view

Photos: David Swift



03



04



05



01



04



02



03

WINE SILO

The project, a 300-square-foot Wine Silo, is designed to house the owner's private wine collection, and is connected to an existing "entertainment" building. The structure lies in the Snake River flood plain, therefore, a traditional wine cellar was out of the question. Borrowing from agrarian structures, the pure silo form is clad in oxidized steel plates to weather and blend with the existing buildings and landscape. The interior, inspired by a wine cask, is characterized by reclaimed fir woodwork and a spiral staircase which accesses carefully displayed wine bottles around its perimeter.

01 Oxidized steel plate skin 02 View from the south 03 Silo interior 04 Entertainment building and silo

Photos: Paul Warchol Photography



JACKSON HOLE CENTER FOR THE ARTS PERFORMANCE HALL

The performance hall at the Jackson Hole Center for the Arts consists of a 500-seat Performing Arts Hall, a music facility, and extensive support facilities. The project design places 200 seats at the orchestra level and 300 seats at the balcony level. The balcony is accessed from the main entrance at street level while the orchestra level is accessed by descending to the lower level lobby, which is a dramatic space capped by a wood slat ceiling covering the form of the underside of the balcony above. This lobby is enclosed by a glass wall, providing a broad view of the iconic mountainscape of Jackson Hole.

01 Lobby at dusk 02 Northeast view 03 First floor plan
04 Performance hall interior

Photos: Ron Johnson

